

# KÄRCHER

makes a difference



## COMMERCIAL DUTY CLEANING.

Battery-powered walk-behind sweeper-vac with traction drive.

PROFESSIONAL | KM 75/40 W BP

# KM 75/40 W BP



## Clean entry into the walk-behind class.

Compact and agile, the KM 75/40 W Bp cleans small to medium-sized areas with excellent results. With convenient traction drive and powerful vacuum system, available with silent battery-powered motor.



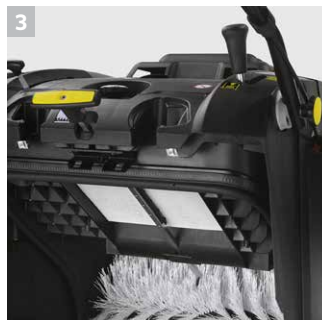
### 1 Waste container with recessed grip

- Waste container with recessed grips – easy to remove and empty.
- Short disposal times.



### 2 Efficient filter system with mechanical filter cleaning

- 19.3 ft<sup>2</sup> filter area for continuous working.
- Made of tough polyester for durability.
- Mechanical filter cleaning system with ergonomic handle.



### 3 Easy to maintain

- Filter and roller broom easy to remove without tools for flexible maintenance.



### 4 EASY Operation concept

- Clear and logical arrangement of all controls on the handle and field of view for ease of use.
- Standard symbols for all Kärcher sweepers.

# Technical data and equipment.

## KM 75/40 W Bp

- = Waste container with trolley grip
- = Roller broom changeover without tools
- = Efficient filter cleaning system with clean filter replacement without tools

### Technical data

<b>Working width with 1 side broom</b>	30" (750 mm)
<b>Drive</b>	DC motor; .5 hp / 400 W
<b>Max. area performance</b>	36,328 ft <sup>2</sup> / hr
<b>Waste container</b>	10.5 gallon / 1.4 cubic ft / (40 l)
<b>Power source</b>	2 x 12 V 70 ah AGM batteries
<b>Sweeping method</b>	Overthrow
<b>Climbing ability</b>	12 %
<b>Working speed</b>	2.8 mph (4.5 km / h)
<b>Filter area</b>	2,790 in <sup>2</sup> (1.8 m <sup>2</sup> ) - flat, pleated with manual shaker
<b>Weight</b>	172 lbs (78 kg) without batteries
<b>Dimensions (L x W x H)</b>	56" x 30" x 46.5" (1430 mm x 780 mm x 1180 mm)

### Equipment

Product	Order No.	Description
KM 75/40 W Bp	9.840-739.0	30" walk-behind sweeper

### Accessories

Order No.	Description
■ 8.631-173.0	Battery, 12V AGM 70 Ah
■ 8.629-377.0	Charger, 24V 25A AGM C50
■ 6.905-626.0	Side Broom, KM Soft Bristle
■ 6.906-884.0	Main Broom, KM 75/40W Bp
■ 5.731-635.0	Filter, KM 75/40W Bp
□ 6.905-625.0	Side Broom, KM, Hard for Difficult/Heavy-duty cleaning
□ 6.906-885.0	Side Broom, Radius 300
□ 6.906-950.0	Anti-Static Rolling Brush
□ 2.641-571.0	Carpet Sweeping Kit (includes fluff filter, anti-static roller brush and triple caster)
□ 6.906-884.0	Flat pleated filter - plastic filter, water resistant, washable, reduces maintenance costs
□ 6.906-886.0	Standard roller broom - water-resistant universal bristles, extremely durable, suitable for all types of surfaces.
□ 6.906-885.0	Main roller broom, soft/natural - specifically designed with natural bristles for sweeping fine dust on smooth indoor floors.

■ Included □ Optional

Please contact us for more information:

**North America**

4555 Airport Way  
Denver, CO 80239  
U.S.A.

Phone 800-456-6649  
Fax 303-738-2818

[www.karcher.com/us](http://www.karcher.com/us)

**Canada**

6535 Millcreek Drive  
Unit 67  
Mississauga, ON L5N 2M2  
Canada

Phone 905-672-8233  
Fax 905-672-3155

[www.karcher.ca](http://www.karcher.ca)